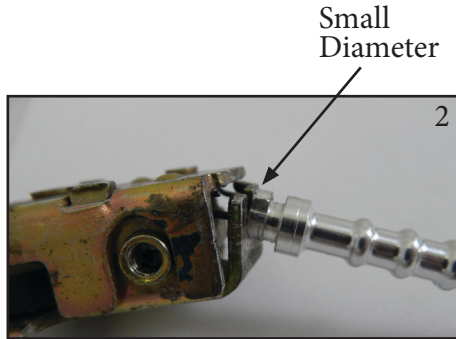


Instructions for Upper Latch

(side and rear doors of vans with CAM ends)

1. Follow steps 1, 2, 4, 5, 6 & 7 as explained on the previous pages. Step 3 is not required.

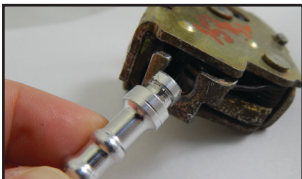
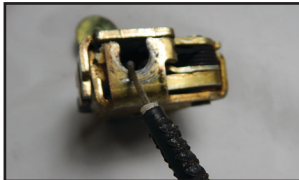
2. Slide the CAM end into the latch, **small diameter first**. After sliding the end all the way and making sure it's snug, twist 90 degrees with pliers to secure in place. (more images below)



3. **DO NOT REINSTALL the completed assembly at this time.** You must attach the other end of the steel cable to the handle and ensure the latch works properly.

4. **Once its confirmed it is all working properly,** oil and/or grease the steel cable and latch(s) as necessary. Proceed to reinstall the completed assembly from the top of the door.

As you can see below, the shape of the CAM end will fit the exact shape of the opening.



NOTES:

- The term “assembly” refers to all parts and pieces that make up the inner workings of the door handles.
- All cars, trucks and vans are different, even some made in the same year can vary. This means that the number of parts, disassembly and reassembly of parts can vary from vehicle to vehicle.
- In some case, it will not be necessary to remove the “assembly” from the door in order to replace the broken end connectors. In some vehicles, you can access the broken pieces simply by removing a door panel. Please look at your car/truck/van carefully before removing any parts.
- If you are having trouble opening any of the doors in your vehicle, give us a call so we can help!

OK MARKETPLACE

These kits work on a variety of vehicles. Please contact us for a full list and for any assistance needed.

561-619-2759

www.okmarketplace.com

© Copyright Pending

OK MARKETPLACE

Door Cable Repair Kit DODGE



**100% MADE
IN THE USA**

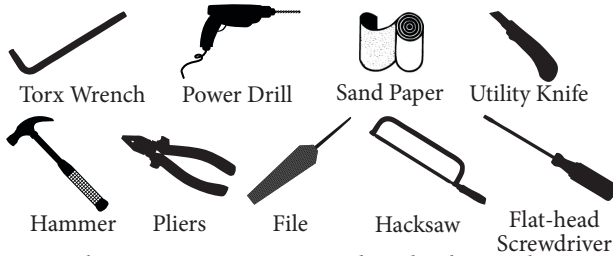
**IMPORTANT
READ ALL
INSTRUCTIONS
BEFORE YOU BEGIN**

****Note: These instructions are a guide ONLY. All vehicles are different. If you need further assistance please call us at:
800.638.3788**

www.okmarketplace.com

User Manual & Instruction Guide

Replacing the new cable end connectors requires a good level of mechanical ability. The following tools are recommended for this project: (some tools may not be used)



It may be necessary to remove door latches and/or handles in order to access the cable attachment point/ends. Be sure to pay close attention to disassembly to make sure you can reassemble without any problems.

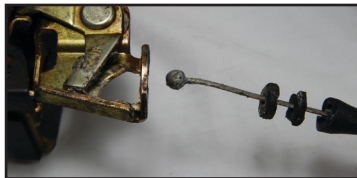
Standard End



CAM End



Examples of Broken Ends



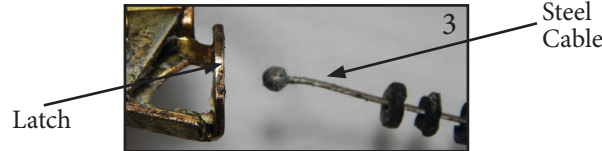
CAM ends can be used for the top latch in some repairs. Standard ends can be used throughout, however there is some risk. When installing with all standard ends, the top latch would need to be bent down to insert the end and then bent back. With the CAM end, you will only need to insert the end and twist with a vice grip to lock in place. (more on inside flap)



Basic Instructions

(can be used with cars, trucks or vans)

- 1. Remove door panel on vehicle.** Each car/truck/van will be different and will have different ways of removing the door panel to reveal the location of the assembly.
- 2. Remove as much of the assembly as necessary.** You may also need to remove the handle portion with a torx wrench and a power drill with a bit. (The drilled out rivets can be replaced with bolts or rivets of like size.)
- 3. Remove steel cable from latch.** Understanding how the mechanism works will help you put it back together. Take your time disassembling. (Take pictures if necessary)



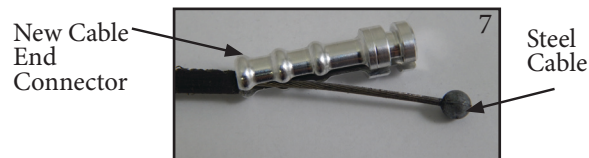
- 4. Remove broken end connector.** Carefully use a utility knife or pliers to cut or break off the broken plastic end connector. Be careful not to cut the internal steel cable.



- 5. Sand rough edges of the sheathing.** This will help allow the new end connector to slide on smoothly. (If necessary, using a utility knife, shave off any extra burs **CAREFULLY** to remove excess roughness)

- 6. Inspect steel cable for broken or frayed strands. DO NOT PROCEED** if your steel cable is broken. A new steel cable is recommended.

- 7. Slide steel cable through slot in new end connector** carefully, feeding the cable into the small diameter side first and slide new end connector down over sheathing



NOTES: If the steel cable is shorter than the new cable end connector, begin to slide the new cable end connector over the sheathing. This should be a fairly easy process, but if you have difficulties here are a few tips:

- If necessary a flat-head screwdriver and hammer may be used to **GENTLY** tap the steel cable into the new cable end connector. Oil or grease based lubricants may also be used to ease insertion force.
- If that does not resolve the problem, you can place the new cable end connector on a solid surface and carefully widen the slot with a flat-head screwdriver and hammer. **DO NOT FORCE**

NOTES: If your steel cable is not long enough to allow the new ends to slip on, you may shorten the length of the new cable end connector with a hacksaw from the small diameter end **ONLY**.

- 8. Repeat process for the other end of steel cable.**

- 9. Re-install the new cable end connectors into the latch.** Pliers may be necessary. Gently squeeze the new cable end connector into the steel slot.



NOTES: DO NOT FORCE the part into place as you may break the latch. You may need to file the slot opening slightly in order to achieve a perfect fit between the latch and the new cable end connector.

- 10. DO NOT REINSTALL the completed assembly at this time.** You must attached the other end of the steel cable to the handle and ensure the latch works properly.

- 11. Once it's confirmed it is all working properly,** oil and/or grease the steel cable and latch(s) as necessary. Re-assemble the parts into the door.